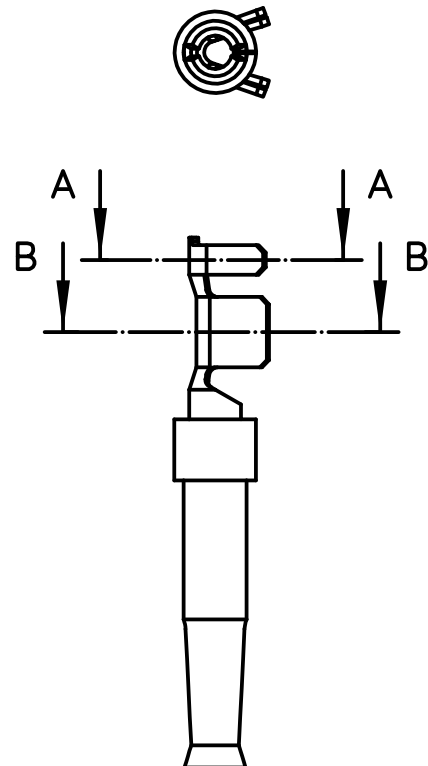
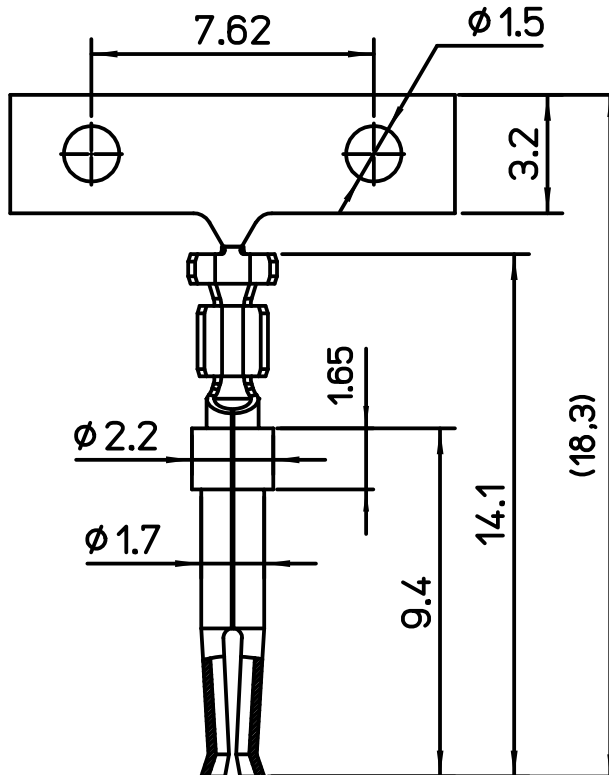
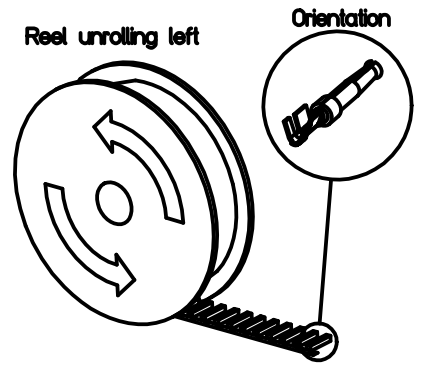
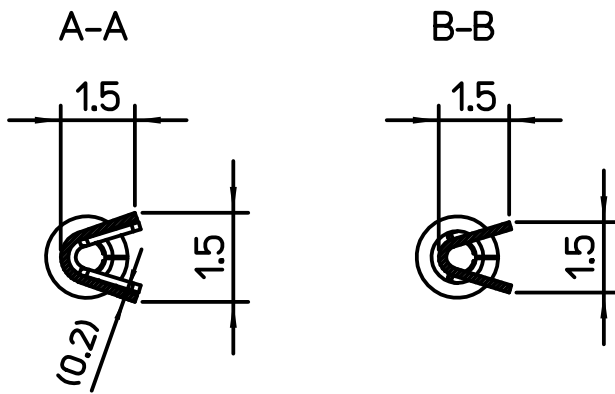


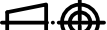
Diritti riservati

All rights reserved



ILME CODE	PERFORMANCE LEVEL
SIF1D 0.2C	PL1
SIF2D 0.2C	PL2
SIF3D 0.2C	PL3

-Selective Gold plating over Nickel in the contact area, tin plating in the crimp area, RoHS conform
 -Material: brass (leadfree)
 -Reel of 500 contacts

REV	DATA	FIRMA	
 Dimensions in mm		Simplified representation with dimensions without tolerance	
Original Size A4		SIFxD 0.2C Stamped female crimp contacts 5A 0.08-0.22mm ² , 24-28 AWG	Scale 5:1
Date 29/10/19			
Sign. Pitasi			
		